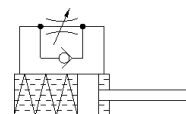
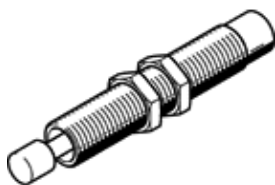


shock absorber DYSW-4-6-Y1F

Part number: 548070

FESTO

Self-adjusting, with progressive characteristic curve.



Data sheet

Feature	Value
Size	4
Stroke	6 mm
Cushioning	self-adjusting Soft characteristic
Assembly position	Any
Position detection	No
Max. impact speed	2 m/s
Reset time short	0.2 s
Reset time long	1 s
Mode of operation	single-acting pushing action
Corrosion resistance classification CRC	2 - Moderate corrosion stress
Ambient temperature	-10 ... 80 °C
Cushioning length	6 mm
Max. stop force	100 N
Max. energy consumption per stroke	0.8 J
Max. energy consumption per hour	7,000 J
Max. residual energy	0.006 J
Reset force	0.7 N
Product weight	6 g
Mounting type	with lock nut
Materials note	Free of copper and PTFE Conforms to RoHS
Material seals	NBR
Material housing	High alloy steel
Material piston rod	High alloy steel