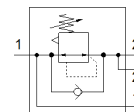
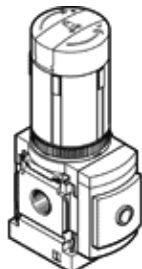


pressure regulator MS6-LRB-1/2-D5-A4-AS

Part number: 530320

FESTO

For manifold assembly, maximum output pressure 4 bar, with adapter G1/8 for pressure gauge acc. to EN 837, port P2 on reverse side.



Data sheet

Feature	Value
Size	6
Series	MS
Actuator lock	Rotary knob with lock with accessories, lockable
Assembly position	Any
Design structure	directly-controlled diaphragm regulator with looped-through compressed air supply
Controller function	Output pressure constant with initial pressure compensation with secondary exhaust
Pressure gauge	Prepared for G1/4
Operating pressure	0.8 ... 20 bar
Pressure regulation range	0.3 ... 4 bar
Max. pressure hysteresis	0.25 bar
Standard nominal flow rate	7,300 l/min
Operating medium	Compressed air in accordance with ISO8573-1:2010 [7:4:4] Inert gases
Note on operating and pilot medium	Lubricated operation possible (subsequently required for further operation)
Corrosion resistance classification CRC	2 - Moderate corrosion stress
Storage temperature	-10 ... 60 °C
Food-safe	See Supplementary material information
Medium temperature	-10 ... 60 °C
Ambient temperature	-10 ... 60 °C
Product weight	747 g
Mounting type	Optional Front panel installation Line installation with accessories
Pneumatic connection, port 1	G1/2
Pneumatic connection, port 2	G1/2
Materials note	Conforms to RoHS
Material control panel	PA POM
Material seals	NBR
Material housing	Aluminium die cast
Material membrane	NBR