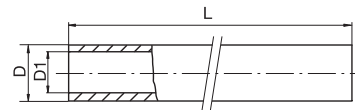
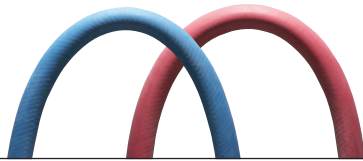
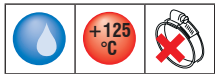


Material EPDM - Push On Hose



Part No.	D1	D	L (m)	Colour	Working Pressure (Bar)	Burst Pressure (Bar)	Bend Radius	
PL10B-HT	10	16	50	●	28	112	80	1
PL10R-HT	10	16	50	●	28	112	80	1
PL13B-HT	13	20	50	●	28	112	100	1
PL13R-HT	13	20	50	●	28	112	100	1
PL19B-HT	19	28,50	50	●	21	84	140	1
PL19R-HT	19	28,50	50	●	21	84	140	1

Tube:

Black, smooth special rubber for high temperature.
Our Push On fittings are recommended.

Reinforcement:

High strength synthetic textile braids.

Cover:

Red or blue, abrasion, and weathering resistant.

Surface:

Smooth fabric.

Applications:

Suitable for delivery of air, hot and cold water, and chemical products low with push lock fitting system.

Temperature range:

Up to +125°C (+257°F).

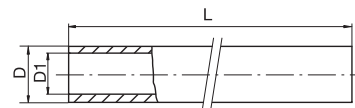
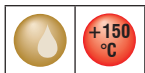
Tolerances:

UNI EN ISO 1307/97 tolerances for inside diameters up to and including 25 mm.

On inside diameter:

For I.D. 5.1 up to 20 mm ± 0.80 mm.
Length tolerance: $\pm 1\%$.
Standards: CNOMO E07.21.115.N.

Material NBR



Part No.	D1	D	L (m)	Colour	Working Pressure (Bar)	Burst Pressure (Bar)	Bend Radius	
N10S	10	16,5	50	●	28	110	75	1
N13S	13	20	50	●	28	110	100	1

Tube:

Black, antistatic, smooth NBR rubber compound, resistant to Oil.

Reinforcement:

Polyvinyl alcohol (PVA).

Cover:

Black smooth CPE rubber compound.

Applications:

Designed for Oil mould temperature controlling.

Temperature range:

Working temperature: Up to +135°C (+275°F)
peak up to +150°C (+302°F).

Tolerances:

UNI EN ISO 1307/97 tolerances for inside diameters up to and including 25 mm.

On inside diameter:

for I.D. 5.1 up to 20 mm ± 0.80 mm.
Length tolerance: $\pm 1\%$.