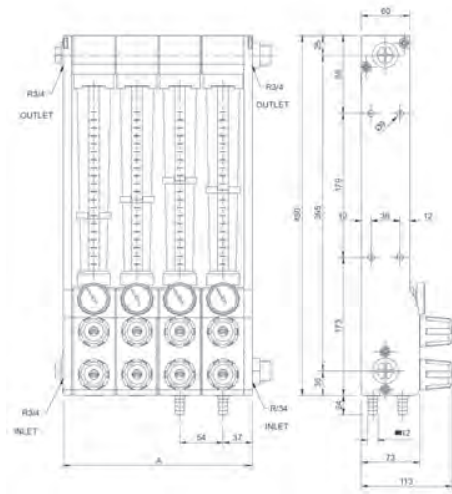


## Waterflow Regulator



Part No.	Main Connections inlet / outlet	Max.Temp.	Zones	Zone Connection	A (mm)
MPR02R	G 3/4"	90°C*	2	G 3/8"	126
MPR04R	G 3/4"	90°C*	4	G 3/8"	231
MPR06R	G 3/4"	90°C*	6	G 3/8"	339
MPR08R	G 3/4"	90°C*	8	G 3/8"	444
MPR10R	G 3/4"	90°C*	10	G 3/8"	552
MPR12R	G 3/4"	90°C*	12	G 3/8"	659

\* Temperature vs Pressure: 8 bar 40°C, 7 bar 60°C, 5 bar 80°C, 4 bar 90°C

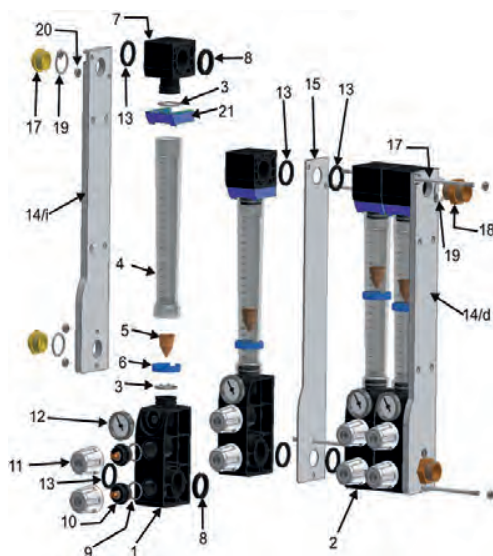
Water flow regulators are ideal for regulating the flow rate of water passing through them as well as the water outlet temperature. The high quality construction and design make the unit one of the most competitive.

### Technical characteristics

- The tube is made of Polyamide (standard).
- Zone Flow Capacity 0-18 L/M
- Interior and exterior bodies are made of PA 6 with 30% fibre glass.
- Brass regulating taps.
- Thermometers (standard).
- Stainless steel interior tie-rods.
- Vitrillic rubber o-rings (hardness: 70 SHA).

**Note!**  
Supplied  
without  
fittings

## Spare Part List



No	Part No.	Description
1	MPR-S-1	Inferior body 3/8 BSP connections
2	MPR-S-2	Inferior body with pipes
3	MPR-S-3	Tube O-ring
4	MPR-S-4	Polyamide tube
5	MPR-S-5	Brass
6	MPR-S-6	Level clip
7	MPR-S-7	Superior body
8	MPR-S-8	Intermediate o-ring
9	MPR-S-9	Tap O-ring 21x3
9.1	MPR-S-9.1	Tap O-ring Ø6x2
10	MPR-S-10	Tap
11	MPR-S-11	Knob
12	MPR-S-12	Thermometer
13	MPR-S-13	End O-ring / left 28x35x3,5
14 d	MPR-S-14d	Right aluminium end plate
14 i	MPR-S-14i	Left aluminium end plate
15	MPR-S-15	Intermediate plate
17	MPR-S-17	Plastic cap
18	MPR-S-18	3/4" brass connector (optional)
20	MPR-S-20	Nut
21	MPR-S-21	Tube security clip
22	MPR-S-22	End O-ring / right 28x35x5,5