



**CA****OE****90°**  
Angle head**Technical Data**

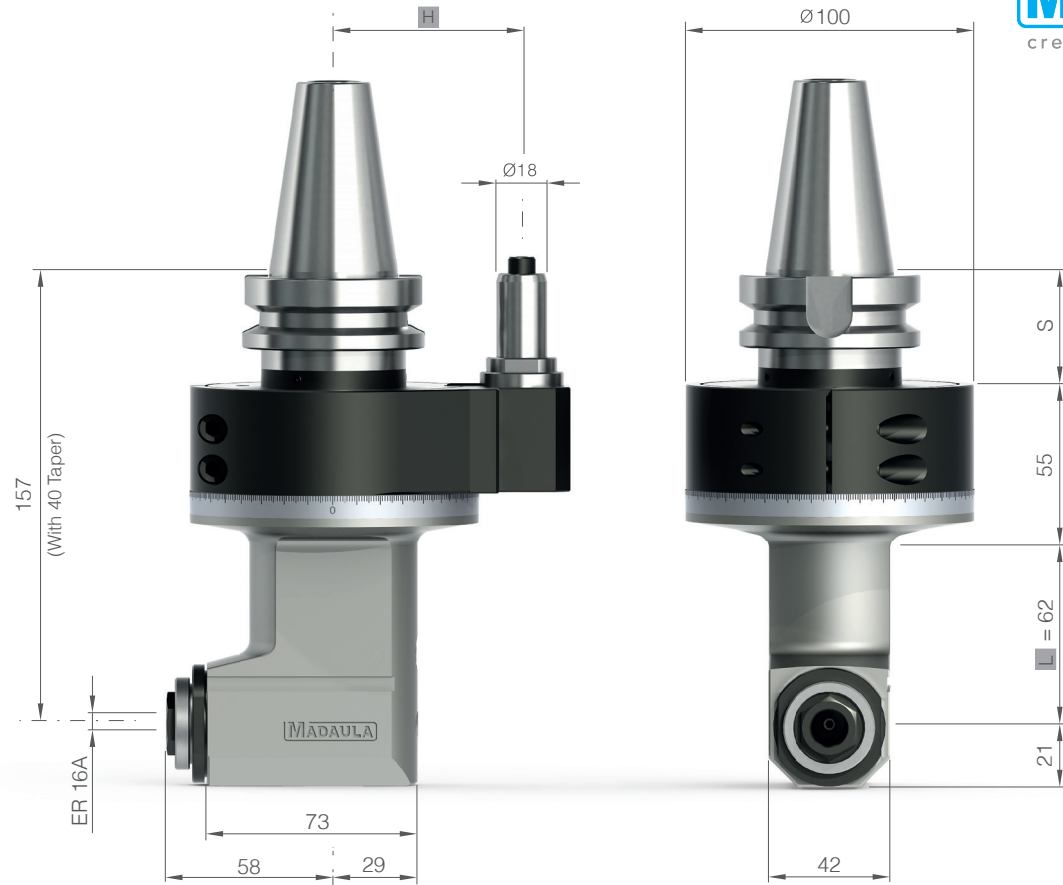
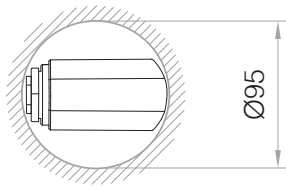
Caractéristiques techniques / Technische Daten

	ER-16A / 10 mm
<b>R.P.M max</b>	4.000
	3.5 kg
	1:1
<b>KW</b>	2 kW
<b>Nm max</b>	6 Nm
<b>Rotation</b>	in = out

**L / H****Other measures under request**

Autres mesures sur demande

Weitere Maßnahmen auf Anfrage

**MADAULA**  
creative solutions**Taper**

Cône / Kegel

**Size**

Taille / Größe

**H****S**

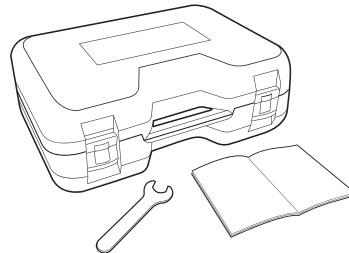
Taper	Size	H	S
<b>DIN 69871 / 2080</b>	30/40/50	55/65/80	40
<b>CAT</b>	30/40/50	55/65/80	40
<b>MAS-BT</b>	30/40/50	55/65/80	40/40/50
<b>HSK</b>	50/63/100	55/65/80	40/40/50
<b>CAPTO</b>	C5/C6/C8	55/65/80	40/40/50
<b>KM</b>	50/63/100	55/65/80	40/40/50

**Standard Equipment**

Standard / Standard

**Optional Equipment**

Optionel / Option

**Stop Block**

Bloc d'arrêt / Anschlag-Block

See page 55 **Collets**

Pinces / Spannzangen

See page 56 **Coolant through index pin**

Arrosage par le doigt d'indexage / Kühlmittelzufuhr durch bolzen

bar/psi max 12/175

**High speed option RPM max**

Haute vitesse en option RPM / Hochgeschwindigkeit optional UPM max

**10.000**