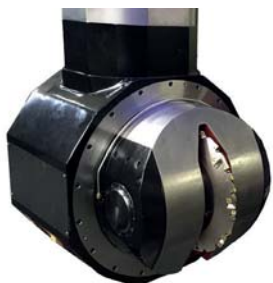


# G.151 Inner / Outer Diameter Gear cutter



## Main features

Wesentliche Merkmale

### Alternative arbor diameters

Andere Achsendurchmesser

### Manual adjustment with worm wheel

Manuelle Einstellung mit Schnecke

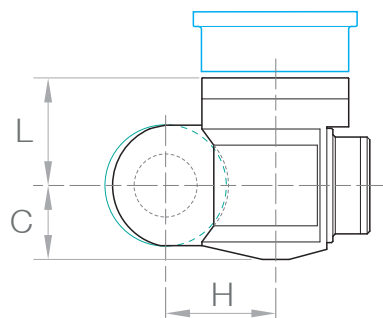
### Angle $\alpha$ adjustment

$\alpha$  Winkel-Einstellung

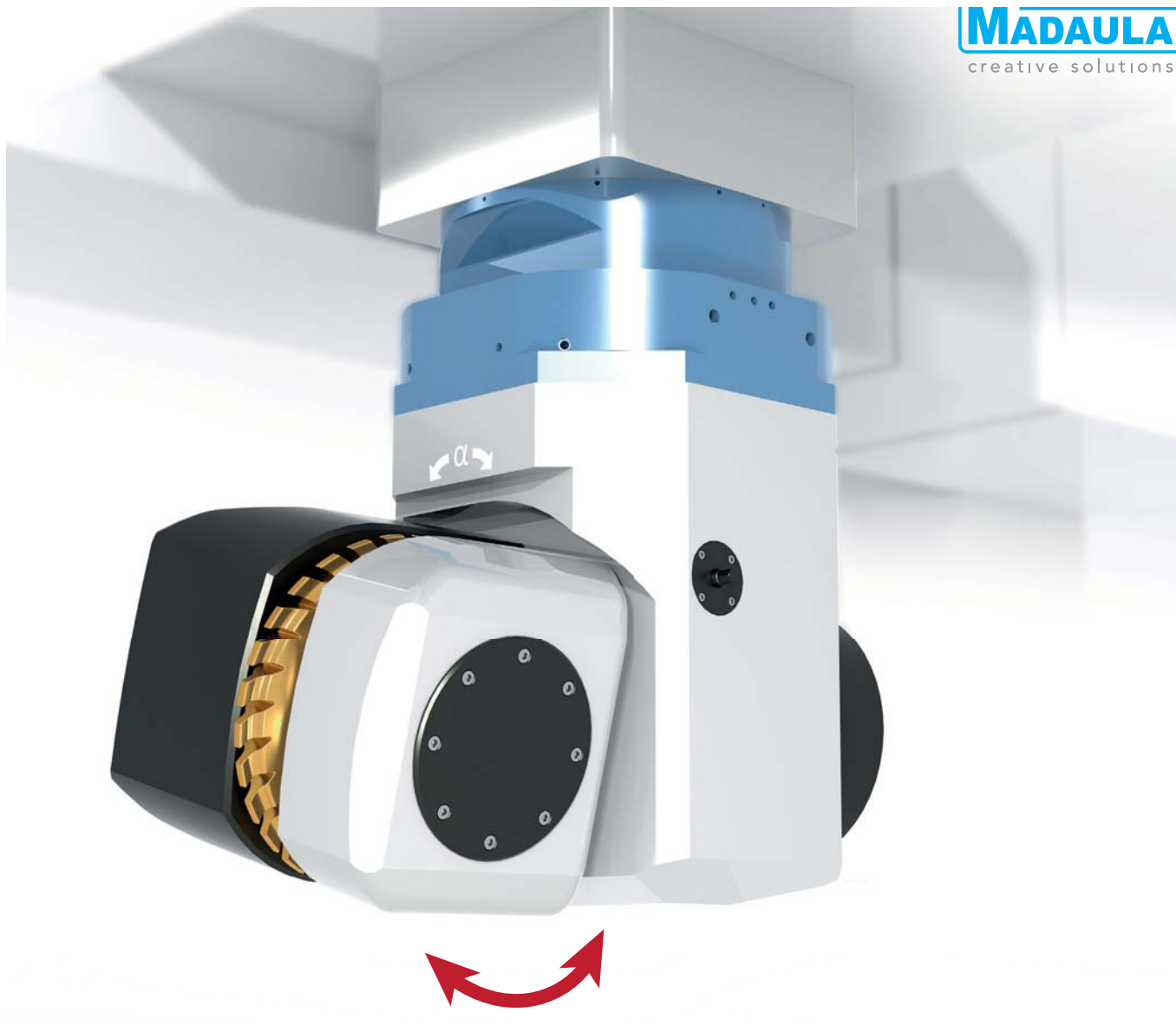
$\pm 30^\circ$







### Flange to any machine

Adaption für jede Art von Maschine



Other measures on request / Andere Maße auf Anfrage



Code	 Arbor	$\varnothing$ Max. tool	 kW	 Nm. Max.	Module	 RPM. Max.	 1:1	 KG	L mm	C mm	H mm
G.151.24	Arbor $\varnothing 70$	450	75	7.000	M20	400	1:1	800	400	150	400