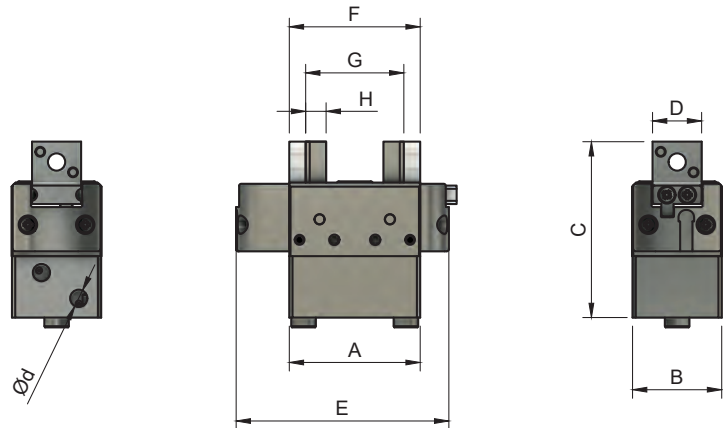


MP.SGP - Compact Parallel Gripper



Part No.	Stroke	Closing force at 6 bar	Opening force at 6 bar	Weight (g)
MP.SGP-20S	4mm	40N	46N	33
MP.SGP-25S	6mm	94N	104N	43
MP.SGP-32S	8mm	120N	134N	86
MP.SGP-40S	12mm	146N	160N	170

Part No.	A	B	C	D	Ød	E	F	G	H
MP.SGP-20S	20	15,8	32	9	M3	36,5	20	16	3,5
MP.SGP-25S	26	17,8	34	10	M3	42,5	25	19	4
MP.SGP-32S	32	21,8	43	12	M3	52	32	24	5
MP.SGP-40S	40	25,8	51	16	M3	62	40	28	6

Double Acting.
Compact Size.
Maximum Operating pressure: 8 bar.
Temperature Range: 5 ÷ 60°C.

The operating position can be checked by one 3 - outputs programmable sensor (not included), detecting the position of the magnet on the right jaw.

The Detected positions can be adjusted by a teaching procedure, so that 3 digital outputs can be:

- Output 1 - totally closed gripper (1)
- Output 2 - gripped part intermediate position (2)
- Output 3 - totally open gripper (3)

