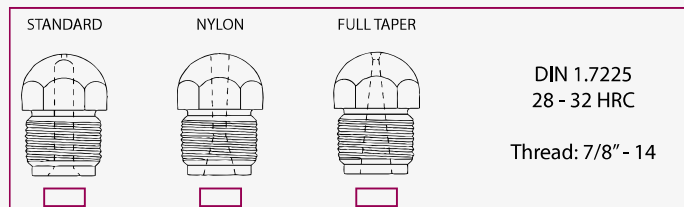
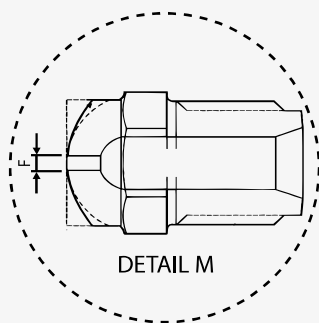
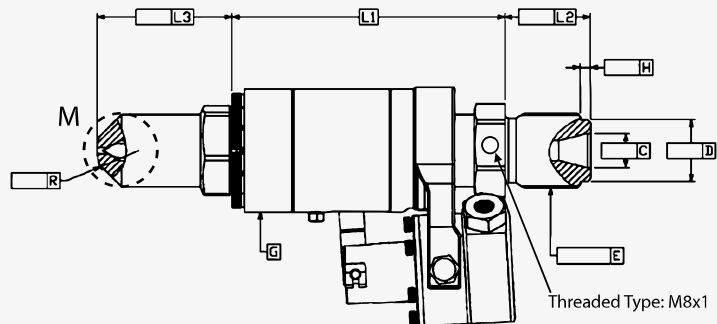
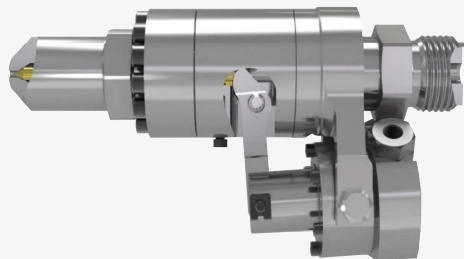


FORM - NEEDLE SHUT OFF NOZZLE (RN)



COD. REROM	MAX SHOT WEIGHT	MAX SCREW SIZE	MAX MACHINE SIZE	L1	G	AIR PRESSURE
E10.KDRN-I	700 g	60	300 T	140	Ø60x80L	6 bar
E10.KDRN-II	6000 g	120	1200 T	178	Ø80x100L	8 bar
E10.KDRN-III	30000 g	240	3000 T	240	Ø115x150L	10 bar

REQUIRED MEASUREMENT							
C	D	E*	H	L2	L3	F	R

All dimensions in [mm].
L3: 20/63/93/113 Customized
Max. Temperature: 400 °C
Max. Inj. Pressure: 3000 [bar]

Application: Injection Molding
Function: Shorten Cycle Time, Prevent Leakage
Suitable Machine: 60T - 2000T

About Needle Shut Off Nozzle (RN)

Mainly serves to solve the low viscosity thermoplastic leakage or to shorten injection cycle time.

The drive can be pneumatic or hydraulic depending on the suitability of the machine.

During storage period of injection unit process, through integrated air or hydraulic cylinder, the inside needle is pushed in axial direction to seal inside nozzle and keep lock-up, so that material won't pass and leak.

During the synchronization process, the screw can melt the polymer at the same time as the mold is opened and save precious time.

E*: Confirm thread RH or LH.