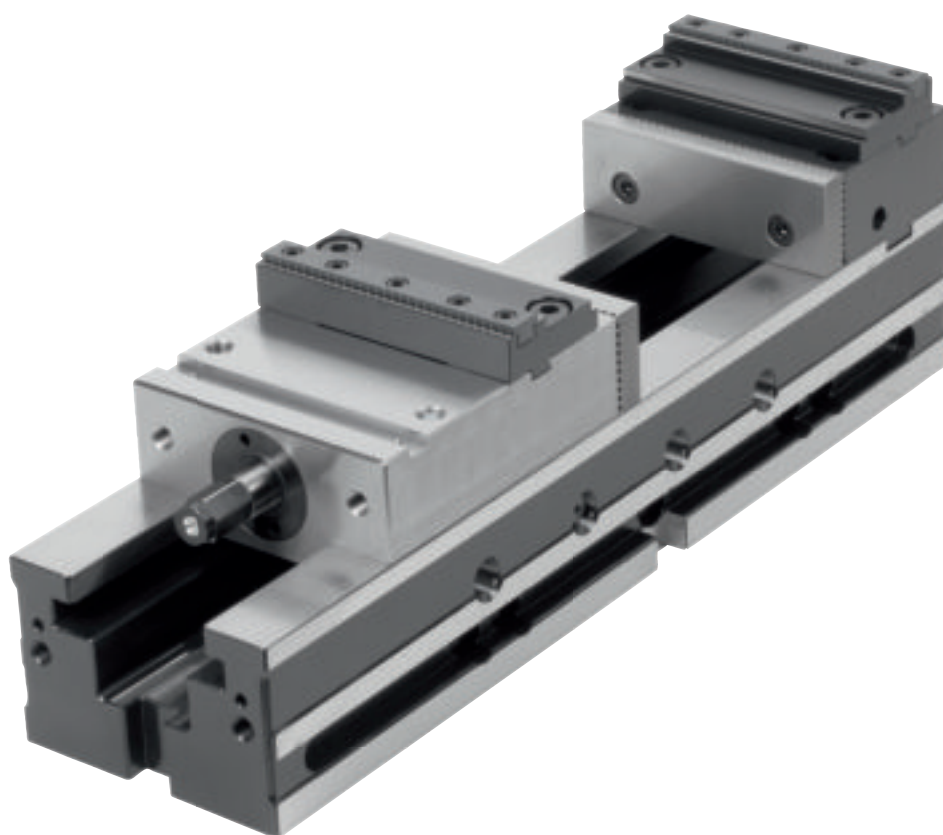


NC Vices



Adaptable

Slot and thread for attachment jaws and gripper inserts.

Optional

Multiple clamping

Several workpieces can be clamped using reversible jaws. Tools are not required for installation.

Individual

Flexible – can be used for any machine table, ready to use immediately with clamp strap set and slot keys (optional).

Optimum positioning

Cross slot for alignment.

Quick pre-adjustment

Locking pins for quick pre-positioning.

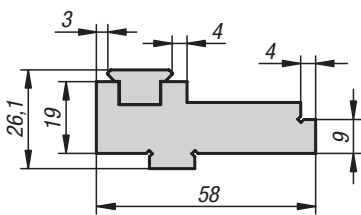
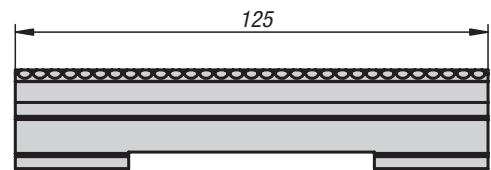
Spindle drive

Mechanical-hydraulic version up to 40 kN or purely mechanical clamping up to 10 kN.

Impressive advantages:

- Repeat accuracy ≤ 0.01 mm
- Fixed jaw fixed in all directions (X,Y,Z)
- Wide clamping range due to use of attachment step jaws
- Basic equipment: 2 rotating screw-in jaws and 1 crank handle
- Can be inclined sideways, with fastening holes for slot spacing of 63 mm and 100 mm.

Attachment step jaw
with gripper for NC vice



Material:
Steel.

Version:
Hardened and ground.

Sample order:
K1273.1251

Note:
The attachment step jaws are for expanding the NC vice clamping width. The gripper jaw pads can be exchanged for smooth jaw pads.

KIPP Attachment step jaw with gripper jaw pad for NC vice

Order No.	Suitable for
K1273.1251	NC vice 125



A large rectangular area filled with a fine grid of light gray lines, intended for handwritten notes.



